



SPRING – SUMMER 2019

# PERSONAL DEVELOPMENT TRAINING COURSES

INSPIRE YOUNG PEOPLE TO GROW

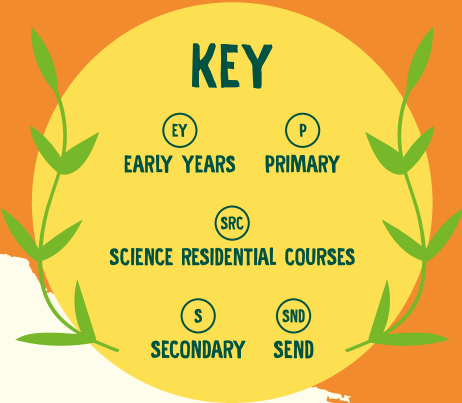
# GROW WITH US

Turn the outdoors into a living, breathing learning resource packed with adventure and wonder.

Our extensive programme of training courses is suitable for anyone involved in teaching and inspiring young people. We will provide you with the skills and confidence to create outdoor learning experiences that impact children's achievement, health and wellbeing, whilst supporting the national curriculum.

All courses are suitable for teachers, teaching assistants, group leaders and volunteers, no matter what previous horticultural experience you have.

The remaining year of scheduled courses can be found online at [schoolgardening.rhs.org.uk](http://schoolgardening.rhs.org.uk).



## CONTENTS

THE EDIBLE GARDEN	3
GROW, COOK, EAT	4
APPLY PRIMARY MATHS AND ENGLISH SKILLS OUTDOORS	5
EXPLORIFY IN THE GARDEN	6
EARLY YEARS GARDEN EXPLORER	7
GARDENING FOR CHILDREN WITH SEND	8
WILLOW ART	9
SCIENCE RESIDENTIAL COURSES	16
SECONDARY SCIENCE TEACH MEETS	18
HOW TO BOOK / PRICING	19

## COURSES BY REGION

SCOTLAND	10
YORKSHIRE AND HUMBER	10
NORTH EAST	11
NORTH WEST	11
EAST MIDLANDS	12
WEST MIDLANDS	12
EAST OF ENGLAND	13
LONDON	13
SOUTH EAST	14
SOUTH WEST	14
WALES	15
NORTHERN IRELAND	15

# THE EDIBLE GARDEN

EY P S SND

This hands-on course is designed to give you and your young people the skills you need to set up a simple, productive garden and manage the growing space throughout the seasons.

The course will cover all the basics so that you can get children actively involved in growing their own food.

- This course will help you to:
- Understand how plants grow from a seed to a crop.
  - Identify the parts of the plant that you eat.
  - Learn how to prepare the soil to get the best yields.
  - Learn how to sow and grow a delicious range of vegetables throughout the year.
  - Make the most of your produce once it has been harvested.



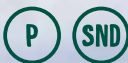


# GROW, COOK, EAT

RHS horticulturalists have teamed up with the learning team at Windmill Hill City Farm to provide a practical course to enable you to put pupil health and wellbeing at the centre of your school, with an ethos and culture of great food.

This course will help you to:

- Meet the new Ofsted criteria and school food plan requirements with effective growing and cooking.
- Make growing and cooking food manageable and accessible in your school.
- Gain the skills and knowledge to grow some easy crops in containers and gardens.
- Gain the confidence to cook imaginative and seasonal produce with your class.
- Deliver fun, engaging and real-life lessons linked to maths, literacy and science.



# APPLY PRIMARY MATHS & ENGLISH SKILLS OUTDOORS



Let nature lead the progression through core subjects. Can you write a house description for a woodlouse, or make a human scattergraph to solve a maths dilemma?

Can your learners take on the challenge of creating a storyboard with only natural materials from the garden?

This course will help you to:

- Plan your own innovative lessons based around what you can find in your school grounds.
- Discover how outdoor learning can be cross curricular.
- Explore creative maths and English experiences that will have a positive impact on learning.
- Broaden the possibilities for delivering the national curriculum outdoors.





# EXPLORIFY IN THE GARDEN



The RHS has teamed up with the Wellcome Trust to develop this one-day course based on the innovative 'Explorify' approach to learning science, set in the context of school gardens.

'Explorify in the Garden' is a practical course that will give you the confidence to take the primary science curriculum outdoors and make full use of the rich tapestry of opportunities that nature, plants and growing provide. Experience how to work with the fascinating digital images and videos from the Wellcome collections, from an RHS 'real world' perspective.

This course will help you to:

- Work with Explorify resources developed by the Wellcome Trust.
- Improve your growing techniques and horticultural understanding.
- Realise how growing topics can spark curiosity and inspire children to question the world around them.
- Discover new plants that can help you teach primary science in an exciting way.



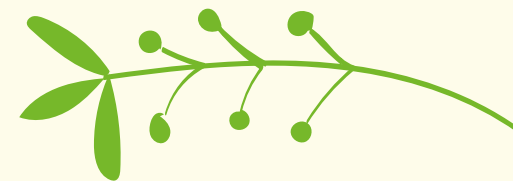
# EARLY YEARS GARDEN EXPLORER



Immerse young children in the natural world with the help of this hands-on course, packed full of fun, engaging growing activities and lesson ideas.

This course will help you to:

- Plan diverse teaching spaces in your outdoor area to make the most of your garden.
- Use growing to improve language and communication skills.
- Develop quick and easy-to-implement activities which link to the garden and work in and out of the classroom.
- Create a diary of seasonal gardening activities focusing on plants that are easy to grow.
- Improve your horticultural understanding and confidence in explaining basic gardening processes to young children.





# GARDENING FOR CHILDREN WITH SEND

If you work with children and young people with Special Education Needs and Disabilities (SEND) and can see the potential of gardening to raise their confidence, self-esteem and achievement, then this is the course for you.

We will give you the practical horticultural skills you need to work safely and confidently with young people, so that they can be fully involved in gardening activities with an appropriate level of challenge.

This course will help you to:

- Select the right seeds, plants and tools for your young people and their needs.
- Teach your young people a range of horticultural skills whilst continuing to assess their progress.
- Link gardening to childrens' personal development plans and see how it supports positive changes to behaviour.
- Use plants in your garden for creative activities and enterprise ideas.

SEND



# WILLOW ART

Develop the basic skills and techniques you need to create three-dimensional, botanical themed sculptures with willow. Use your newly acquired expertise to create art installations, suitable for the classroom or garden.

This course will help you to:

- Understand how to grow and store willow, where to source it and how best to prepare this natural material for use throughout the year.
- Get ideas of how to use willow with children of different ages.
- Get to grips with a variety of construction methods – you'll be able to take your sculptures away with you!

P





# COURSES BY REGION



## SCOTLAND

Course	Date	Venue	Address
THE EDIBLE GARDEN	Wednesday 13 February 2019	Jordanhill School	45 Chamberlain Road, Glasgow G13 1SP
EXPLORIFY IN THE GARDEN	Wednesday 13 March 2019	Our Lady of Mission	29 Wood Farm Road, Thornliebank, Glasgow G46 7EY
EXPLORIFY IN THE GARDEN	Tuesday 30 April 2019	St Peters Primary School	10 Falcon Road, Edinburgh, EH10 4AH
THE EDIBLE GARDEN	Tuesday 7 May 2019	James Gillespie's High School	57 Lauderdale St, Edinburgh EH9 1DD
THE EDIBLE GARDEN	Wednesday 15 May 2019	Duthie Park	Polmuir Road, Aberdeen AB11 7WA

## YORKSHIRE AND HUMBER

Course	Date	Venue	Address
THE EDIBLE GARDEN	Wednesday 20 February 2019	RHS Garden Harlow Carr	Crag Lane, Harrogate, North Yorkshire HG3 1QB
GROW, COOK, EAT	Thursday 4 April 2019	Greenhill Primary School	Greenhill Road, Wakefield WF1 4LU
EXPLORIFY IN THE GARDEN	Tuesday 7 May 2019	Sheffield Botanical Gardens	Clarkehouse Rd, Sheffield S10 2LN
PRACTICAL IDEAS FOR TEACHING PLANTS: YEAR 1 TO YEAR 6	Thursday 20 – Friday 21 June 2019	York Science Centre	National STEM Learning Centre, University of York, Heslington, York YO10 5DD
SUPPORTING AND TEACHING SECONDARY SCIENCE THROUGH PLANTS	Wednesday 26 – Thursday 27 June 2019	York Science Centre	National STEM Learning Centre, University of York, Heslington, York YO10 5DD

## NORTH EAST

Course	Date	Venue	Address
EARLY YEARS GARDEN EXPLORER	Wednesday 27 March 2019	Willows Montessori Nursery	Barmoor Lane, Ryton Village, Tyne and Wear NE40 3QP
THE EDIBLE GARDEN	Wednesday 24 April 2019	Abbeyfields First School	Abbots Way, Morpeth NE61 2LZ
EXPLORIFY IN THE GARDEN	Thursday 20 June 2019	Durham University Botanic Gardens	South Road, Durham DH1 3TN

## NORTH WEST

Course	Date	Venue	Address
THE EDIBLE GARDEN	Thursday 7 March 2019	St Mary's Catholic Primary	Belgrave Avenue, Congleton, Cheshire CW12 1HT
EXPLORIFY IN THE GARDEN	Thursday 14 March 2019	Ordsall Hall	322 Ordsall Lane, Ordsall, Salford, M5 3AN
GROW, COOK, EAT	Thursday 21 March 2019	Clarendon Primary School	Recreation St, Bolton BL3 6SN
APPLY PRIMARY MATHS AND ENGLISH SKILLS OUTDOORS	Wednesday 1 May 2019	Eagley Infants School	Stonestead Drive, Bromley Cross, Bolton BL7 9LN



# EAST MIDLANDS

Course	Date	Venue	Address
A YEAR IN YOUR GARDENING CLUB	Wednesday 20 March 2019	Tuxford Academy	Marnham Road, Tuxford, Newark, Notts NG22 0JH
EXPLORIFY IN THE GARDEN	Thursday 23 May 2019	Leicester Botanical Gardens	Glebe Rd, Oadby, Leicester LE2 2LD

# WEST MIDLANDS

Course	Date	Venue	Address
APPLY PRIMARY MATHS AND ENGLISH SKILLS OUTDOORS	Tuesday 5 March 2019	Winterbourne House	University of Birmingham, 58 Edgbaston Park Road, Edgbaston, Birmingham B15 2RT
EXPLORIFY IN THE GARDEN	Thursday 21 March 2019	St Benedict's Primary School	St Benedict's Road, Small Heath, Birmingham, West Midlands. B10 9DP
THE EDIBLE GARDEN	Friday 29 March 2019	President Kennedy School	Rookery Lane, Holbrooks, Coventry CV6 4GL
GROW, COOK, EAT	Wednesday 1 May 2019	Winterbourne House	University of Birmingham, 58 Edgbaston Park Road, Edgbaston, Birmingham B15 2RT

# EAST OF ENGLAND

Course	Date	Venue	Address
THE EDIBLE GARDEN	Wednesday 6 March 2019	RHS Garden Hyde Hall	Creep hedge Lane, Rettendon, Chelmsford, Essex CM3 8ET
EXPLORIFY IN THE GARDEN	Wednesday 3 April 2019	Beth Chatto Gardens	Elmstead Market, Colchester, Essex Co7 7DB
GARDENING FOR CHILDREN WITH SEND	Wednesday 22 May 2019	Priory School	Mount Road, Bury St Edmunds IP32 7BH
GROW, COOK, EAT	Thursday 6 June 2019	RHS Garden Hyde Hall	Creep hedge Lane, Rettendon, Chelmsford, Essex CM3 8ET

# LONDON

Course	Date	Venue	Address
THE EDIBLE GARDEN	Wednesday 13 March 2019	John Ruskin School	John Ruskin Street, Camberwell, London SE5 0PQ
EXPLORIFY IN THE GARDEN	Thursday 28 March 2019	Poplar Primary School	Poplar Road South, Merton Park, London SW19 3JZ
GROW, COOK, EAT	Wednesday 15 May 2019	Charlton Manor Primary School	Indus Road, Charlton, London SE7 7EF





## SOUTH EAST

Course	Date	Venue	Address
THE EDIBLE GARDEN	Wednesday 6 March 2019	RHS Garden Wisley	Woking, Surrey, GU23 6QB
WILLOW WEAVING	Thursday 14 March 2019	RHS Garden Wisley	Woking, Surrey, GU23 6QB
EARLY YEARS GARDEN EXPLORER	Friday 22 March 2019	Sythwood Bungalow	Sythwood School Sythwood, Horsell Woking GU21 3AX
GROW, COOK, EAT	Wednesday 8 May 2019	RHS Garden Wisley	Woking, Surrey, GU23 6QB

## SOUTH WEST

Course	Date	Venue	Address
APPLY PRIMARY MATHS AND ENGLISH SKILLS OUTDOORS	Wednesday 27 February 2019	RHS Garden Rosemoor	Great Torrington, Devon EX38 8PH
GROW, COOK, EAT	Monday 11 March 2019	Windmill City Hill Farm	Philip Street, Bedminster, Bristol BS3 4EA
THE EDIBLE GARDEN	Wednesday 13 March 2019	University of Bristol Botanic Gardens	The Holmes, Stoke Park Road, Bristol, BS9 1JG
EXPLORIFY IN THE GARDEN	Wednesday 22 May 2019	RHS Garden Rosemoor	Great Torrington, Devon EX38 8PH

## WALES

Course	Date	Venue	Address
THE EDIBLE GARDEN	Wednesday 20 March 2019	Hendredenny Park Primary School	White Cross Lane, Caerphilly CF83 2RL

## NORTHERN IRELAND

Course	Date	Venue	Address
THE EDIBLE GARDEN	Friday 22 March 2019	Maghaberry Community Centre	Maghaberry Rd, Maghaberry, Lisburn BT67 0JG
THE EDIBLE GARDEN	Friday 17 May 2019	Grow Community Garden	The Waterworks, Westland Gardens, Belfast BT14 6TA





# PRACTICAL IDEAS FOR TEACHING PLANTS: YEAR 1 TO YEAR 6



The RHS Campaign for School Gardening has joined forces with the National STEM Learning Centre (NSLC) to create this two-day residential course where we aim to provide you with the skills and knowledge to use plant science confidently throughout Key stages 1 and 2. Be inspired with curriculum linked projects to share with all year group teachers and ensure plants feature in exciting lesson ideas!

## DAY 1

Will be spent at the NSLC where you will be introduced to interesting plants and shown how to use them to teach science across both primary key stages. You will also learn a range of simple propagation techniques to use back in school.

### Aims and Activities:

- Develop horticultural skills and knowledge of plant science for use across both primary key stages.
- Explore activities within the national curriculum to develop children's enquiry skills.
- Acquire a bank of investigations to share with colleagues to ensure progression of learning.
- Reflect on your learning to inform future planning.

## DAY 2

Will involve a morning session at nearby St Nicks Community Garden, looking at outdoor learning activities around trees, pond dipping and mini beast safaris.

This is a residential course. Fees include meals and accommodation at the NSLC which is based on the University of York campus.

Dates: 20 - 21 June 2019. Cost: £640 plus VAT, covered by an ENTHUSE bursary\* of £540 plus VAT

**Book this course directly through NSLC at [www.stem.org.uk](http://www.stem.org.uk), course reference number NY019a18**

\* Teachers working in state-funded schools in the UK are eligible for these bursaries which can be used to contribute to covering the cost of course fees, supply cover, travel, accommodation or equipment for your school.

# SUPPORTING AND TEACHING SECONDARY SCIENCE THROUGH PLANTS



This two-day residential course will provide you with the inspiration, knowledge, practical skills and confidence to support teaching and learning in secondary school science, especially biology and environmental science.

## DAY 1

Will be spent learning about plants you can use to support teaching in the classroom. There will be opportunities to engage in practical activities and learning focused around the curriculum i.e. growth and development, asexual and sexual reproduction, tropisms and germination.

### Aims and Activities:

- Learn how to propagate and grow a range of fascinating plants for use in the science classroom.
- Develop skills in ecology fieldwork, learn sampling techniques for a range of habitats.
- Learn how a variety of habitats can be created, developed and managed within the school grounds and how these can be used to teach ideas about the environment, air quality and plant disease.
- Spend time preparing an action plan to put your learning into practice.

This is a residential course. Fees include meals and accommodation at the NSLC which is based on the University of York campus for the duration of the course.

Dates: Wednesday 26th - Thursday 27th June 2019. Cost: £640 plus VAT, eligible for ENTHUSE bursary\* award of £555.

**Book this course directly through NSLC at [www.stem.org.uk](http://www.stem.org.uk), course reference number NY260a18**





# SECONDARY SCIENCE TEACH MEETS

Throughout the year we offer a selection of free after school twilight sessions. During each session we showcase a series of plant-based science experiments that have been designed to inspire the imagination of students whilst meeting the current curriculum.

These are informal sessions that also provide welcome opportunities for you to meet and swap ideas with other professionals in your area. Sessions run from 4-6pm so as not to impact on the school day.

Search on our website for a session near you and have fun trying the experiments for yourself before taking these achievable, practical projects back to school.



## HOW TO BOOK

Booking forms can be found on our website at [schoolgardening.rhs.org.uk/cpd](https://schoolgardening.rhs.org.uk/cpd) or you can email [cpd@rhs.org.uk](mailto:cpd@rhs.org.uk) to reserve a space.

## PRICING

One course	£95
Two courses (or two people on one course)	£170
Explorify in the Garden	£40



### PHOTOGRAPHY CREDITS

RHS/Brad Wakefield (Front Cover, p7,p13, p16), Paul Debois (p4), Chris Bull (p5), Helen Yates (p6, p12, p19), Richard Dawson (p8), Tim Sandall (p9), Julie Howden (p3, p11, p14, p15), Emma Griffith (p18), Mark Waugh (Back Page)



Pictured: Ellie Micklewright (15),  
Young School Gardener of the Year 2018



# RHS SCHOOL GARDENERS of the YEAR 2019

*Supported by Hartley Botanic*

## COMPETITION ENTRIES NOW OPEN!

Do you know a pupil, teacher, volunteer or young gardening team that is passionate about the power of plants?

Nominate them for one of our awards for the chance to win a host of amazing prizes including:

A greenhouse or  
patio glasshouse  
from Hartley Botanic

A visit from  
TV Gardener  
Frances Tophill

Tools and seeds

£500 for your  
school or group

Visit [schoolgardening.rhs.org.uk/sgoty19](https://schoolgardening.rhs.org.uk/sgoty19)  
to nominate a green fingered hero by Wednesday 24 April 2019



RHS registered charity no: 222879/SCO38262