



AUTUMN 2019 – SPRING 2020

PERSONAL DEVELOPMENT TRAINING COURSES

INSPIRE YOUNG PEOPLE TO GROW

GET SET...GROW!

Harness the power of plants and ensure that your young people gain valuable, long-lasting learning experiences in the garden.

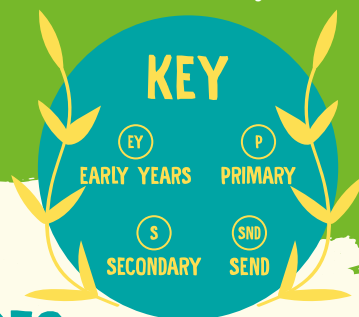
Our training courses are suitable for anyone involved in teaching and inspiring young people. We aim to provide you with the skills, confidence and abilities to create outdoor learning experiences that will benefit children's health and wellbeing and raise their achievement levels, whilst supporting the national curriculum.

All courses are suitable for teachers, teaching assistants, group leaders and volunteers, no

matter what previous horticultural experience they have.

This year, we've introduced a new course, Gardening Basics, where we'll go over all the essentials that you'll need to get your young people growing.

Our full calendar of training courses can be found online at schoolgardening.rhs.org.uk. Keep an eye out for our spring/summer course brochure, which will be available in February 2020.



CONTENTS

GARDENING BASICS	3
A YEAR IN YOUR GARDENING CLUB	4
THE EDIBLE GARDEN	5
EXPLORIFY IN THE GARDEN	6
GARDENING FOR CHILDREN WITH SEND	7
GROW, COOK, EAT	8
RHS CAMPAIGN	9
TAILOR-MADE / SCITT TRAINING	16
SECONDARY SCIENCE TEACH MEETS	17
SCHOOL VISITS	17
COURSES & WORKSHOPS	18
HOW TO BOOK / PRICING	19

COURSES BY REGION

SCOTLAND	10
YORKSHIRE AND HUMBER	10
NORTH EAST	11
NORTH WEST	11
EAST MIDLANDS	12
WEST MIDLANDS	12
EAST OF ENGLAND	13
LONDON	13
SOUTH EAST	14
SOUTH WEST	14
WALES	15
NORTHERN IRELAND	15

GARDENING BASICS

EY P S SND

If you're new to gardening and are feeling a little overwhelmed, this is the course for you. We will take you back to basics and grow your knowledge from the ground up.

This course will help you to:

- choose the right compost for the right job, sow seeds indoors and out and understand the next steps to help your plants flourish
- understand how to help plants thrive with simple feeding and watering
- share ideas and enthusiasm with others and get inspired to plan your own school or community growing space
- improve your gardening skills, with a view to sharing growing knowledge with others
- familiarise yourself with a range of RHS recommended plants for beginner gardeners



A YEAR IN YOUR GARDENING CLUB

EY P SND

Get clued up on how to keep your gardening club flourishing in all weathers and seasons throughout the year.

Learn basic horticultural skills and find out about safety aspects and practical considerations needed to set up and run a successful gardening club.

This course will help you to:

- set up and run a sustainable gardening club
- plan a full programme of fun, creative indoor and outdoor activities, week in, week out throughout the year
- learn basic skills of soil preparation, sowing, plant establishment and maintenance to support your club activities



THE EDIBLE GARDEN

EY P S SND

This course will help you to:

- understand how plants grow from a seed to a crop
- identify the parts of the plant that you eat
- learn how to prepare the soil to get the best yields
- learn how to sow and grow a delicious range of vegetables throughout the year
- make the most of your produce once it has been harvested

This hands-on course is designed to give you and your young people the skills you need to set up a simple productive garden and manage the growing space throughout the seasons.

The course will cover all the basics so that you can get children actively involved in growing their own food.



EXPLORIFY IN THE GARDEN



The RHS has teamed up with the Wellcome Trust to develop this one-day course, based on the innovative 'Explorify' approach to learning science, set in the context of school gardens.

'Explorify in the Garden' is a practical course that will give you the confidence to take the primary science curriculum outdoors and make full use of the rich tapestry of opportunities that nature, plants and growing provide. Experience how to work with the fascinating digital images and videos from the Wellcome collections from an RHS 'real world' perspective.

This course will help you to:

- work with Explorify resources developed by the Wellcome Trust
- improve your growing techniques and horticultural understanding
- realise how growing topics can spark curiosity and inspire children to question the world around them
- discover new plants that can help you teach primary science in an exciting way, whilst having a positive impact on learning



GARDENING FOR CHILDREN WITH SEND



If you work with children and young people with Special Education Needs and Disabilities (SEND) and can see the potential of gardening to raise their confidence, self-esteem and achievement, then this is the course for you.

We will give you the practical horticultural skills you need to work safely and confidently with young people, so that they can be fully involved in gardening activities with an appropriate level of challenge.

This course will help you to:

- select the right seeds, plants and tools for your young people and their needs
- teach your young people a range of horticultural skills whilst continuing to assess their progress
- link gardening to childrens' personal development plans and see how it supports positive changes to behaviour
- use plants in your garden for creative activities and enterprise ideas



GROW, COOK, EAT



RHS horticulturists have teamed up with the learning team at Windmill Hill City Farm to provide a practical course to enable you to put pupil health and wellbeing at the centre of your school, with an ethos and culture of great food.

This course will help you to:

- meet the new Ofsted criteria and school food plan requirements with effective growing and cooking
- make growing and cooking food manageable and accessible in your school
- gain the skills and knowledge to grow some easy crops in containers and gardens
- gain the confidence to cook imaginative and seasonal produce with your class
- deliver fun, engaging lessons linked to maths, literacy and science



ABOUT THE RHS CAMPAIGN FOR SCHOOL GARDENING



The work we do is designed to inspire and support schools and groups to provide young people with opportunities to enhance their skills and boost their development through gardening and growing.

Our work has shown that the direct benefits of growing plants are wide ranging. It can:

- improve physical and mental wellbeing
- build life skills such as confidence, teamwork and communication
- enhances literacy, numeracy and oracy skills
- enriches the entire curriculum from science, maths and geography, to art, design and languages
- encourage a better and healthier lifestyle
- teach about the environment and sustainability
- help young people engage with their surroundings better and develop a sense of responsibility



If you haven't already, you can register free with us to receive your Campaign Welcome Pack and have access to our many projects and competitions, all designed to get young people growing.

Join us at schoolgardening.rhs.org.uk today.



COURSES BY REGION



SCOTLAND

Course	Date	Venue	Address
A YEAR IN YOUR GARDENING CLUB	Wednesday 2 October 2019	St. Lucy's Primary School	Oak Road, Abrohill, Cumbernauld, G67 3LQ
EXPLORIFY IN THE GARDEN	Monday 21 October 2019	Our Lady of Mission	29 Wood Farm Road, Thornliebank, Glasgow, G46 7EY
GARDENING BASICS	Tuesday 17 March 2020	Townhead Primary School	Dochart Drive, Townhead, Coatbridge ML5 2PG

YORKSHIRE AND HUMBER

Course	Date	Venue	Address
A YEAR IN YOUR GARDENING CLUB	Friday 18 October 2019	RHS Garden Harlow Carr	Crag Lane, Harrogate, North Yorkshire HG3 1QB
THE EDIBLE GARDEN	Wednesday 18 March 2020	RHS Garden Harlow Carr	Crag Lane, Harrogate, North Yorkshire HG3 1QB
GROW, COOK, EAT	Thursday 26 March 2020	Greenhill Primary School	Greenhill Road, Wakefield, WF1 4LU

NORTH EAST

Course	Date	Venue	Address
A YEAR IN YOUR GARDENING CLUB	Tuesday 15 October 2019	Durham University Botanic Garden	South Road, Durham DH1 3TN
THE EDIBLE GARDEN	Tuesday 24 March 2020	St Joseph's Roman Catholic Primary School	Front St, Stanley, Co. Durham, DH9 0NP

NORTH WEST

Course	Date	Venue	Address
SECONDARY SCIENCE TEACH MEET	Tuesday 8 October 2019	Co-operative Academy of Manchester	Plant Hill Road, Higher Blackley, Manchester, M9 0WQ
A YEAR IN YOUR GARDENING CLUB	Thursday 10 October 2019	Ordsall Hall	322 Ordsall Lane, Ordsall, Salford, M5 3AN
THE EDIBLE GARDEN	Wednesday 4 March 2020	St Mary's Catholic Primary School	Belgrave Avenue, Congleton, Cheshire CW12 1HT
EXPLORIFY IN THE GARDEN	Wednesday 25 March 2020	Ordsall Hall	322 Ordsall Lane, Ordsall, Salford, M5 3AN



EAST MIDLANDS

Course	Date	Venue	Address
EXPLORIFY IN THE GARDEN	Thursday 10 October 2019	Leicester Botanical Gardens	Glebe Road, Oadby, Leicester, LE2 2LD
A YEAR IN YOUR GARDENING CLUB	Thursday 7 November 2019	Mayflower Primary School	Evington Drive, Leicester, LE5 5PH
THE EDIBLE GARDEN	Wednesday 18 March 2020	Bleasby Church of England Primary School	Station Rd, Bleasby, Nottingham NG14 7GD

WEST MIDLANDS

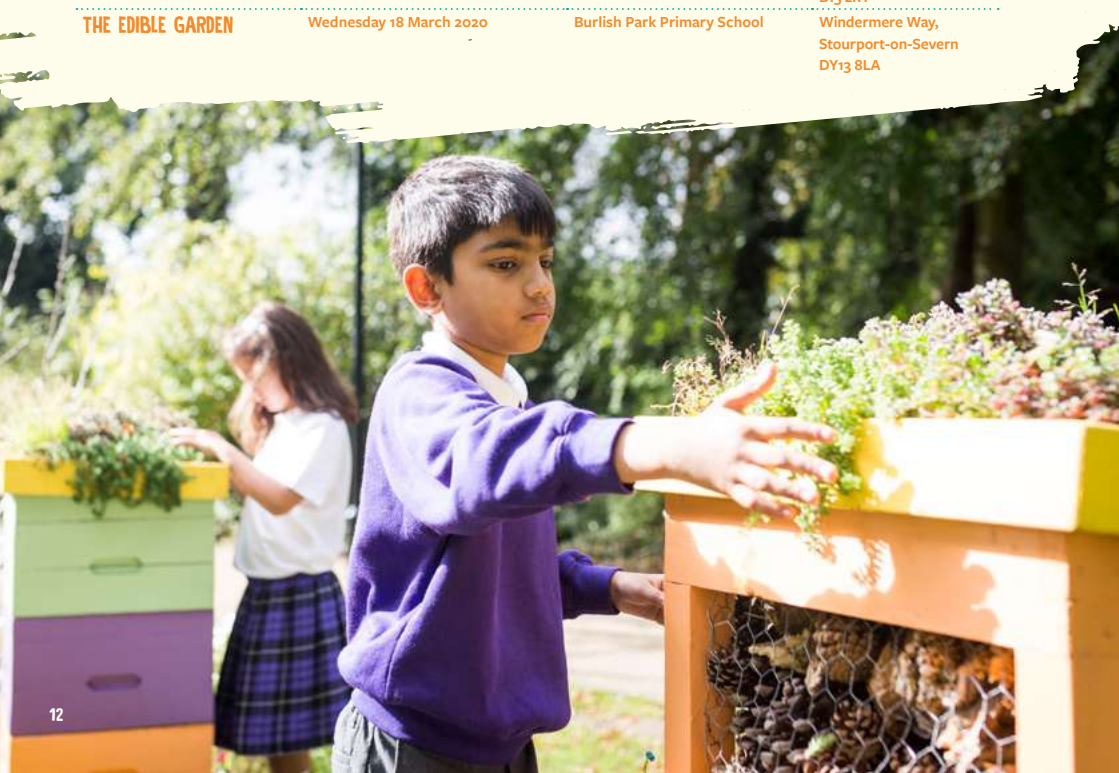
Course	Date	Venue	Address
A YEAR IN YOUR GARDENING CLUB	Thursday 17 October 2019	St Benedict's Primary School	St Benedict's Road, Small Heath, Birmingham, West Midlands B10 9DP
GROW, COOK, EAT	Thursday 7 November 2019	Winterbourne House and Gardens	University of Birmingham, 58 Edgbaston Park Road, Edgbaston, Birmingham B15 2RT
EXPLORIFY IN THE GARDEN	Wednesday 4 March 2020	Winterbourne House and Gardens	University of Birmingham, 58 Edgbaston Park Road, Edgbaston, Birmingham B15 2RT
THE EDIBLE GARDEN	Wednesday 18 March 2020	Burlish Park Primary School	Windermere Way, Stourport-on-Severn DY13 8LA

EAST OF ENGLAND

Course	Date	Venue	Address
A YEAR IN YOUR GARDENING CLUB	Tuesday 15 October 2019	RHS Garden Hyde Hall	Creepthedge Lane, Rettendon, Chelmsford, Essex CM3 8ET
EXPLORIFY IN THE GARDEN	Friday 1 November 2019	Cambridge University Botanic Gardens	1 Brookside, Cambridge CB2 1JE
GROW, COOK, EAT	Wednesday 11 March 2020	RHS Garden Hyde Hall	Creepthedge Lane, Rettendon, Chelmsford, Essex CM3 8ET

LONDON

Course	Date	Venue	Address
A YEAR IN YOUR GARDENING CLUB	Wednesday 9 October 2019	John Ruskin School	John Ruskin Street, Camberwell, London SE5 0PQ
EXPLORIFY IN THE GARDEN	Wednesday 6 November 2019	Charlton Manor Primary School	Indus Road, Charlton, London SE7 7EF
GROW, COOK, EAT	Wednesday 26 February 2020	Sarum Hall School	Eton Avenue, London, NW3 3EL
THE EDIBLE GARDEN	Wednesday 25 March 2020	Rhyl Primary School	7-31 Rhyl Street, London NW5 3HB



SOUTH EAST

Course	Date	Venue	Address
EXPLORIFY IN THE GARDEN	Wednesday 9 October 2019	RHS Garden Wisley	Woking, Surrey, GU23 6QB
GARDENING FOR CHILDREN WITH SEND	Wednesday 16 October 2019	RHS Garden Wisley	Woking, Surrey, GU23 6QB
A YEAR IN YOUR GARDENING CLUB	Wednesday 6 November 2019	RHS Garden Wisley	Woking, Surrey, GU23 6QB
THE EDIBLE GARDEN	Wednesday 12 February 2020	RHS Garden Wisley	Woking, Surrey, GU23 6QB
GARDENING BASICS	Wednesday 11 March 2020	RHS Garden Wisley	Woking, Surrey, GU23 6QB

SOUTH WEST

Course	Date	Venue	Address
A YEAR IN YOUR GARDENING CLUB	Wednesday 16 October 2019	RHS Garden Rosemoor	Great Torrington, Devon EX38 8PH
EXPLORIFY IN THE GARDEN	Wednesday 13 November 2019	University of Bristol Botanic Gardens	The Holmes, Stoke Park Road, Bristol, BS9 1JG
THE EDIBLE GARDEN	Wednesday 4 March 2020	RHS Garden Rosemoor	Great Torrington, Devon EX38 8PH

WALES

Course	Date	Venue	Address
A YEAR IN YOUR GARDENING CLUB	Wednesday 16 October 2019	Sbectrwm Community Centre	Bwiche Road, Fairwater, Cardiff, CF5 3EF
THE EDIBLE GARDEN	Wednesday 11 March 2020	Sbectrwm Community Centre	Bwiche Road, Fairwater, Cardiff, CF5 3EF

NORTHERN IRELAND

Course	Date	Venue	Address
GROW, COOK, EAT	Friday 27 September 2019	Maghaberry Community Garden	Maghaberry Road, Maghaberry, Lisburn, BT67 0JG



TAILOR-MADE TRAINING

We can offer tailor-made training to schools and groups. Our team can work with you to build a course from a range of inspiring modules including practical horticultural skills, food growing, wildlife gardening and teaching curriculum subjects using the garden.

SCHOOL CENTRED INITIAL TEACHER TRAINING

Our aim is to support newly qualified teachers as they embark on their school careers, providing them with the skills to deliver outdoor learning opportunities with their pupils.

We have worked closely with SCITT and University providers to develop a training programme that specifically supports new teachers. The programme can be designed for full day, half day or twilight sessions.

For more information please contact the team on cpd@rhs.org.uk.

SECONDARY SCIENCE TEACH MEETS

Throughout the year we offer a selection of free after school twilight sessions. During each session we showcase a series of plant-based science experiments that have been designed to inspire the imagination of students whilst meeting the current curriculum.

These are informal sessions that also provide welcome opportunities for you to meet and swap ideas with other professionals in your area. Sessions run from 4-6pm so as not to impact on the school day.

Search on our website for a session near you and have fun trying the experiments for yourself before taking these achievable, practical projects back to school.

SCHOOL VISITS

The RHS offers an exciting programme of workshops for schools at each of its gardens. For more information go to the Education and Learning section of the RHS website at: rhs.org.uk/education-learning/gardening-children-schools.



COURSES & WORKSHOPS

The four RHS gardens offer a wide range of workshops and courses to develop your knowledge of plants and gardens, from pruning and propagation to art and photography.

For more information, go to the course section of the RHS website at:

rhs.org.uk/education-learning/courses-workshops

HOW TO BOOK

Book online at schoolgardening.rhs.org.uk/cpd or email us at cpd@rhs.org.uk

PRICING

One course	£95
Two courses or two people on one course	£170
Explorify in the Garden	£40

PHOTOGRAPHY CREDITS

RHS / Luke MacGregor (Front Cover, p5, p7, p9), RHS / Joanna Kossak (p3),
RHS / Mark Waugh (p4, p11), RHS / Georgi Mabey (p6, p16),
RHS / Helen Yates (p8), RHS / Mark Waugh (p12),
RHS / Julie Howden (p13, p15, p19), RHS / Guy Harrop (p14),
RHS / Julian Weigall (p17), RHS / Jason Ingram (p18)
Unsplash / Caylat (Back Page)